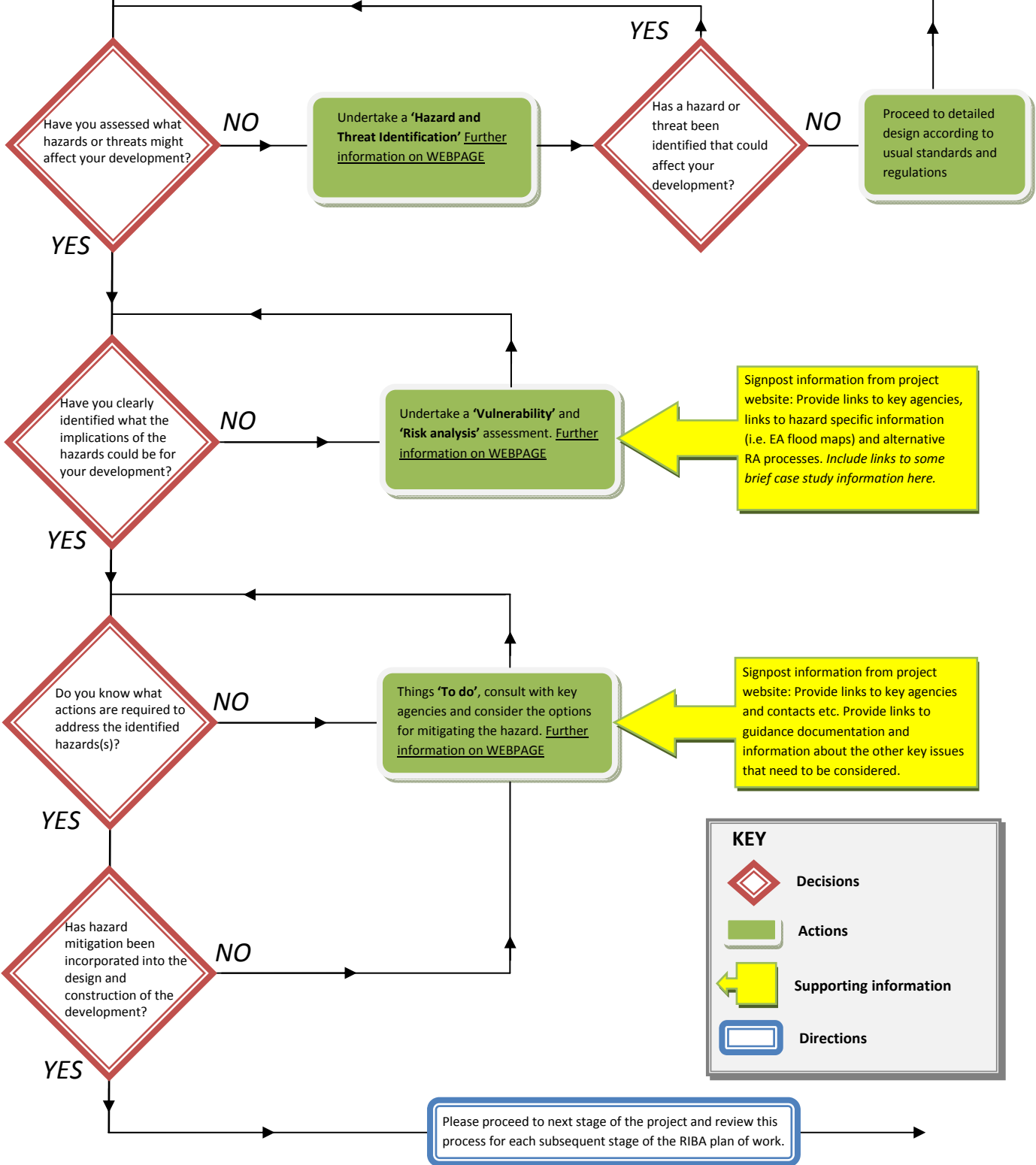




# Framework for 'PRE-EMPT for Projects'

**START**  
It is important to consider which person on the project team is the most appropriate person to take responsibility for this assessment.  
*Upfront the tool will recommend considering this in Stage B or C of the RIBA 'Plan of Work'.*

Initial assessment suggests that hazard mitigation is not a priority for your development. Please record this decision for future reference and use **PRE-EMPT** on future projects.



Signpost information from project website: Provide links to key agencies, links to hazard specific information (i.e. EA flood maps) and alternative RA processes. *Include links to some brief case study information here.*

Signpost information from project website: Provide links to key agencies and contacts etc. Provide links to guidance documentation and information about the other key issues that need to be considered.